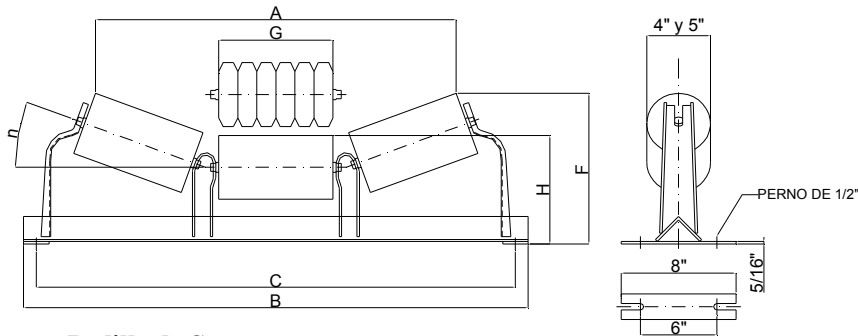




# CEMA B



# POLIN DE CARGA, TRANSICION E IMPACTO



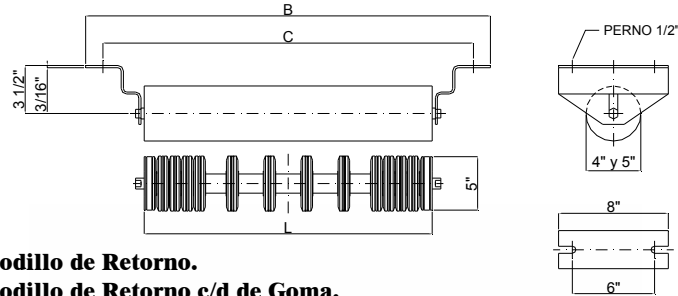
**PB-XXXX-01 = Polín Estación con Rodillo de Carga.**  
**PB-XXXX-02 = Polín Estación con Rodillo de Impacto.**

CINTA	n (°)	Modelo		A		B	C	F		G	H		PESO (Kgs)	
		4"	5"	4"	5"			4"	5"		4"	5"	4"	5"
16"	20°	PB-1642-01	PB-1652-01	18 11/16"	18 5/16"	27"	25"	8 15/16"	9 1/2"	6 1/8"	6 7/8"	7 3/8"	14	15
		PB-1642-02	PB-1652-02	475mm	465mm	686mm	635mm	227mm	241mm	156mm	175mm	187mm	14	15
	35°	PB-1643-01	PB-1653-01	17"	16 7/16"	27"	25"	10 1/2"	10 15/16"	6 1/8"	6 7/8"	7 3/8"	14	15
		PB-1643-02	PB-1653-02	432mm	418mm	686mm	635mm	267mm	278mm	156mm	175mm	187mm	14	15
	45°	PB-1644-01	PB-1654-01	15 13/16"	15"	27"	25"	11 7/16"	11 3/4"	6 1/8"	6 7/8"	7 3/8"	14	16
		PB-1644-02	PB-1654-02	402mm	381mm	686mm	635mm	291mm	298mm	156mm	175mm	187mm	14	16
18"	20°	PB-1842-01	PB-1852-01	21 1/8"	20 15/16"	29"	27"	9 5/8"	9 13/16"	7"	7 1/8"	7 3/8"	15	16
		PB-1842-02	PB-1852-02	537mm	532mm	737mm	686mm	244mm	249mm	178mm	181mm	187mm	15	16
	35°	PB-1843-01	PB-1853-01	19 1/8"	18 7/8"	29"	27"	11 1/4"	11 7/16"	7"	7 1/8"	7 3/8"	15	16
		PB-1843-02	PB-1853-02	486mm	479mm	737mm	686mm	280mm	291mm	178mm	181mm	187mm	15	16
	45°	PB-1844-01	PB-1854-01	17 5/8"	17 1/4"	29"	27"	12 1/4"	12 3/8"	7"	7 1/8"	7 3/8"	15	17
		PB-1844-02	PB-1854-02	448mm	438mm	737mm	686mm	311mm	314mm	178mm	181mm	187mm	15	17
20"	20°	PB-2042-01	PB-2052-01	22 1/2"	22 5/16"	31"	29"	9 3/4"	10"	7 1/2"	7 1/8"	7 3/8"	16	17
		PB-2042-02	PB-2052-02	572mm	567mm	787mm	737mm	248mm	254mm	191mm	181mm	187mm	16	17
	35°	PB-2043-01	PB-2053-01	20 7/16"	20 1/8"	31"	29"	11 1/2"	11 3/4"	7 1/2"	7 1/8"	7 3/8"	16	17
		PB-2043-02	PB-2053-02	519mm	511mm	787mm	737mm	292mm	298mm	191mm	181mm	187mm	16	17
	45°	PB-2044-01	PB-2054-01	18 13/16"	18 7/16"	31"	29"	12 9/16"	12 3/4"	7 1/2"	7 1/8"	7 3/8"	16	18
		PB-2044-02	PB-2054-02	478mm	468mm	787mm	737mm	349mm	324mm	191mm	181mm	187mm	16	18
24"	20°	PB-2442-01	PB-2452-01	26 7/8"	26 11/16"	35"	33"	10 5/16"	10 1/2"	9"	7 1/8"	7 3/8"	18	19
		PB-2442-02	PB-2452-02	683mm	678mm	889mm	838mm	262mm	267mm	229mm	181mm	187mm	18	19
	35°	PB-2443-01	PB-2453-01	24 7/16"	24 1/8"	35"	33"	12 3/8"	12 5/8"	9"	7 1/8"	7 3/8"	18	19
		PB-2443-02	PB-2453-02	621mm	613mm	889mm	838mm	314mm	321mm	229mm	181mm	187mm	18	19
	45°	PB-2444-01	PB-2454-01	22 7/16"	22 1/8"	35"	33"	13 5/8"	13 13/16"	9"	7 1/8"	7 3/8"	18	20
		PB-2444-02	PB-2454-02	570mm	562mm	889mm	838mm	346mm	351mm	229mm	181mm	187mm	18	20
30"	20°	PB-3042-01	PB-3052-01	32 11/16"	32 1/2"	41"	39"	11"	11 3/16"	11"	7 1/8"	7 3/8"	20	22
		PB-3042-02	PB-3052-02	830mm	826mm	1041mm	991mm	279mm	284mm	279mm	181mm	187mm	20	22
	35°	PB-3043-01	PB-3053-01	29 3/4"	29 7/16"	41"	39"	13 9/16"	13 3/4"	11"	7 1/8"	7 3/8"	20	22
		PB-3043-02	PB-3053-02	756mm	748mm	1041mm	991mm	344mm	349mm	279mm	181mm	187mm	20	22
	45°	PB-3044-01	PB-3054-01	27 5/16"	26 15/16"	41"	39"	15 1/16"	15 1/4"	11"	7 1/8"	7 3/8"	20	23
		PB-3044-02	PB-3054-02	694mm	684mm	1041mm	991mm	383mm	387mm	279mm	181mm	187mm	20	23
36"	20°	PB-3642-01	PB-3652-01	38 5/16"	38 1/8"	47"	45"	11 5/8"	11 7/8"	13"	7 1/8"	7 3/8"	23	25
		PB-3642-02	PB-3652-02	973mm	968mm	1194mm	1143mm	295mm	302mm	330mm	181mm	187mm	23	25
	35°	PB-3643-01	PB-3653-01	34 15/16"	34 5/8"	47"	45"	14 11/16"	14 7/8"	13"	7 1/8"	7 3/8"	23	26
		PB-3643-02	PB-3653-02	887mm	879mm	1194mm	1143mm	373mm	378mm	330mm	181mm	187mm	23	26
	45°	PB-3644-01	PB-3654-01	32 1/16"	31 11/16"	47"	45"	16 7/16"	16 5/8"	13"	7 1/8"	7 3/8"	23	26
		PB-3644-02	PB-3654-02	814mm	805mm	1194mm	1143mm	418mm	422mm	330mm	181mm	187mm	23	26

El Olivar 2264 Paradero 47 Santa Rosa  
 Fono : 56-02-8523371 - 56-02-8523492  
 Email : polimet@polimet.cl

Santiago - Chile  
 Fono Fax: 56-02-8523488

## POLIN DE RETORNO Y RETORNO C/D DE GOMA

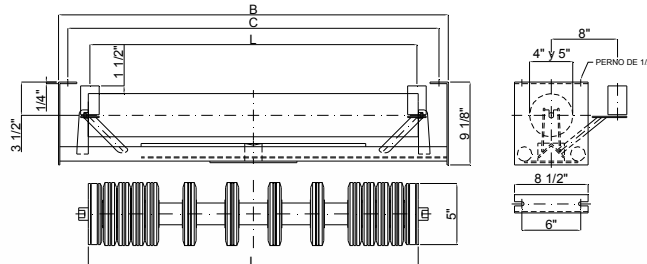


**PB-XXXX-03 = Polín Estación con Rodillo de Retorno.**

**PB-XXXX-04 = Polín Estación con Rodillo de Retorno c/d de Goma.**

CINTA	Modelo		L	B	C	Nº ANILLOS	PESO (Kgs)	
	4 "	5 "					4 "	5 "
18"	PB-1840-03	PB-1850-03	21"	29 1/2"	27"	7		
		PB-1850-04	533mm	749mm	686mm			
20"	PB-2040-03	PB-2050-03	23"	31 1/2"	29"	7		
		PB-2050-04	584mm	800mm	737mm			
24"	PB-2440-03	PB-2450-03	27"	35 1/2"	33"	8		
		PB-2450-04	686mm	902mm	838mm			
30"	PB-3040-03	PB-3050-03	32"	41 1/2"	39"	9		
		PB-3050-04	838mm	1054mm	991mm			
36"	PB-3640-03	PB-3650-03	39"	47 1/2"	45"	10		
		PB-3650-04	991mm	1207mm	1143mm			

## POLIN AUTOCENTRANTE DE RETORNO Y RETORNO C/D DE GOMA

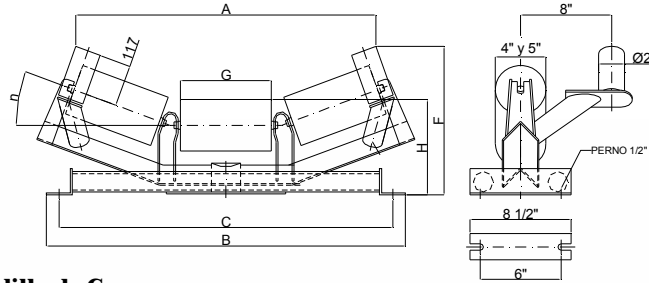


**PB-XXXX-06 = Polín Estación con Rodillo de Retorno.**

**PB-XXXX-07 = Polín Estación con Rodillo de Retorno c/d de Goma.**

CINTA	Modelo		L	B	C	Nº ANILLOS	PESO (Kgs)	
	4 "	5 "					4 "	5 "
18"	PB-1840-06	PB-1850-06	21"	29 1/2"	27"	7		
		PB-1850-07	533mm	749mm	686mm			
20"	PB-2040-06	PB-2050-06	23"	31 1/2"	29"	7		
		PB-2050-07	584mm	800mm	737mm			
24"	PB-2440-06	PB-2450-06	27"	35 1/2"	33"	8		
		PB-2450-07	686mm	902mm	838mm			
30"	PB-3040-06	PB-3050-06	32"	41 1/2"	39"	9		
		PB-3050-07	838mm	1054mm	991mm			
36"	PB-3640-06	PB-3650-06	39"	47 1/2"	45"	10		
		PB-3650-07	991mm	1207mm	1143mm			

# POLIN AUTOCENTRANTE DE CARGA



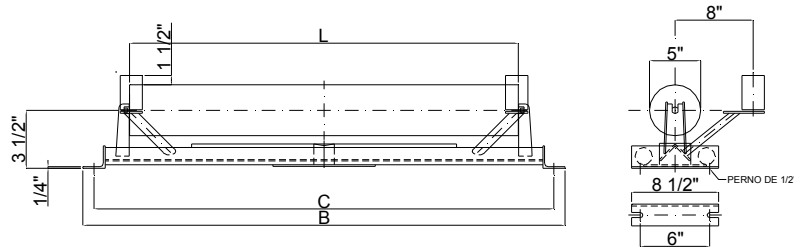
**PB-XXXX-05 = Polín Estación con Rodillo de Carga.**

CINTA	n (°)	Modelo		A		B	C	F		G	H		PESO (Kgs)	
		4"	5"	4"	5"			4"	5"		4"	5"	4"	5"
16"	20°	PB-1642-05	PB-1652-05	19 5/16"	19 5/16"	27 1/2"	25"	12 3/4"	12 3/4"	6 1/8"	7 5/8"	8 3/16"		
				491	491	699	635	324	324	156	194	194		
	35°	PB-1643-05	PB-1653-05	16 3/16"	16 3/16"	27 1/2"	25"	14 1/4"	14 1/4"	6 1/8"	7 5/8"	8 3/16"		
				411	411	699	635	362	362	156	194	208		
	45°	PB-1644-05	PB-1654-05	13 7/8"	13 7/8"	27 1/2"	25"	15"	15"	6 1/8"	7 5/8"	8 3/16"		
				352	352	699	645	381	381	156	194	208		
18"	20°	PB-1842-05	PB-1852-05	21 1/8"	21 1/8"	29 1/2"	27"	13"	13"	7"	7 5/8"	8 3/16"		
				537	537	749	686	330	330	178	194	194		
	35°	PB-1843-05	PB-1853-05	18 1/8"	18 1/8"	29 1/2"	27"	14 9/16"	14 9/16"	7"	7 5/8"	8 3/16"		
				460	460	749	686	370	370	178	194	208		
	45°	PB-1844-05	PB-1854-05	15 3/4"	15 3/4"	29 1/2"	27"	15 7/16"	15 7/16"	7"	7 5/8"	8 3/16"		
				400	400	749	686	392	392	178	194	208		
20"	20°	PB-2042-05	PB-2052-05	23"	23"	31 1/2"	29"	13 1/8"	13 1/8"	7 1/2"	7 5/8"	8 3/16"		
				584	584	800	737	333	333	191	194	194		
	35°	PB-2043-05	PB-2053-05	19 7/8"	19 7/8"	31 1/2"	29"	15"	15"	7 1/2"	7 5/8"	8 3/16"		
				505	505	800	737	381	381	191	194	208		
	45°	PB-2044-05	PB-2054-05	17 5/16"	17 5/16"	31 1/2"	29"	15 15/16"	15 15/16"	7 1/2"	7 5/8"	8 3/16"		
				440	440	800	737	405	405	191	194	208		
24"	20°	PB-2442-05	PB-2452-05	26 7/8"	26 7/8"	35 1/2"	33"	13 11/16"	13 11/16"	9"	7 5/8"	8 3/16"		
				683	683	902	838	348	348	229	194	194		
	35°	PB-2443-05	PB-2453-05	23 7/16"	23 7/16"	35 1/2"	33"	15 3/4"	15 3/4"	9"	7 5/8"	8 3/16"		
				595	595	902	838	400	400	229	194	208		
	45°	PB-2444-05	PB-2454-05	20 9/16"	20 9/16"	35 1/2"	33"	16 7/8"	16 7/8"	9"	7 5/8"	8 3/16"		
				522	522	902	838	429	429	229	194	208		
30"	20°	PB-3042-05	PB-3052-05	32 9/16"	32 9/16"	41 1/2"	39"	14 1/4"	14 1/4"	11"	7 5/8"	8 3/16"		
				827	827	1054	991	362	362	279	194	194		
	35°	PB-3043-05	PB-3053-05	28 11/16"	28 11/16"	41 1/2"	39"	16 7/8"	16 7/8"	11"	7 5/8"	8 3/16"		
				729	729	1054	991	429	429	279	194	208		
	45°	PB-3044-05	PB-3054-05	25 7/16"	25 7/16"	41 1/2"	39"	18 1/4"	18 1/4"	11"	7 5/8"	8 3/16"		
				646	646	1054	991	464	464	279	194	208		
36"	20°	PB-3642-05	PB-3652-05	38 3/8"	38 3/8"	47 1/2"	45"	14 15/16"	14 15/16"	13"	7 5/8"	8 3/16"		
				975	975	1207	1143	379	379	330	194	194		
	35°	PB-3643-05	PB-3653-05	33 15/16"	33 15/16"	47 1/2"	45"	18 1/16"	18 1/16"	13"	7 5/8"	8 3/16"		
				862	862	1207	1143	459	459	330	194	208		
	45°	PB-3644-05	PB-3654-05	30 1/4"	30 1/4"	47 1/2"	45"	19 11/16"	19 11/16"	13"	7 5/8"	8 3/16"		
				768	768	1207	1143	500	500	330	194	208		
42"	20°	PB-4242-05	PB-4252-05	44 1/4"	44 1/4"	53 1/2"	51"	15 3/4"	15 3/4"	15"	8"	8 3/16"		
				1124	1124	1359	1295	400	400	381	203	194		
	35°	PB-4243-05	PB-4253-05	39"	39"	53 1/2"	51"	19 3/16"	19 3/16"	15"	8"	8 9/16"		
				991	991	1359	1295	487	487	381	203	217		
	45°	PB-4244-05	PB-4254-05	34 7/8"	34 7/8"	53 1/2"	51"	21 1/8"	21 1/8"	15"	8"	8 9/16"		
				886	886	1359	1295	537	537	381	203	217		

El Oliver 2264 Paradero 47 Santa Rosa  
Fono : 56-02-8523371 - 56-02-8523492  
Email : polimet@polimet.cl

Santiago - Chile  
Fono Fax: 56-02-8523488

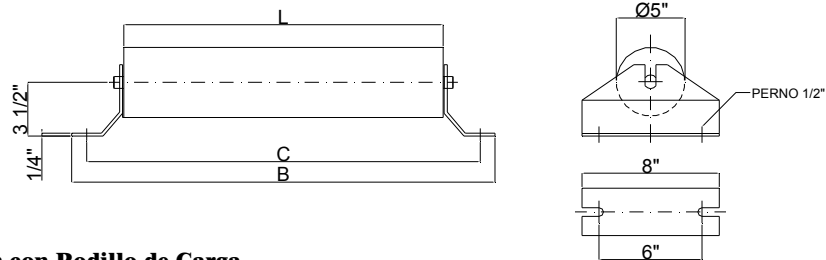
## POLIN AUTOCENTRANTE DE CARGA PLANO



**PB-XXXX-08 = Polín Estación con Rodillo de Carga.**

CINTA	Modelo		L	B	C	PESO (Kgs)	
	4 "	5 "				4 "	5 "
18"	PB-1840-08	PB-1850-08	21"	29 1/2"	27"		
			533	749	686		
20"	PB-2040-08	PB-2050-08	23"	31 1/2"	29"		
			584	800	737		
24"	PB-2440-08	PB-2450-08	27"	35 1/2"	33"		
			686	902	838		
30"	PB-3040-08	PB-3050-08	33"	41 1/2"	39"		
			838	1054	991		
36"	PB-3640-08	PB-3650-08	39"	47 1/2"	45"		
			991	1207	1143		

## POLIN DE CARGA PLANO



**PB-XXXX-09 = Polín Estación con Rodillo de Carga.**

CINTA	Modelo		L	B	C	PESO (Kgs)	
	4 "	5 "				4 "	5 "
18"	PB-1850-09	PB-1840-09	21"	29 1/2"	27"		
			533	749	686		
20"	PB-2050-09	PB-2040-09	23"	31 1/2"	29"		
			584	800	737		
24"	PB-2450-09	PB-2440-09	27"	35 1/2"	33"		
			686	902	838		
30"	PB-3050-09	PB-3040-09	33"	41 1/2"	39"		
			838	1054	991		
36"	PB-3650-09	PB-3640-09	39"	47 1/2"	45"		
			991	1207	1143		